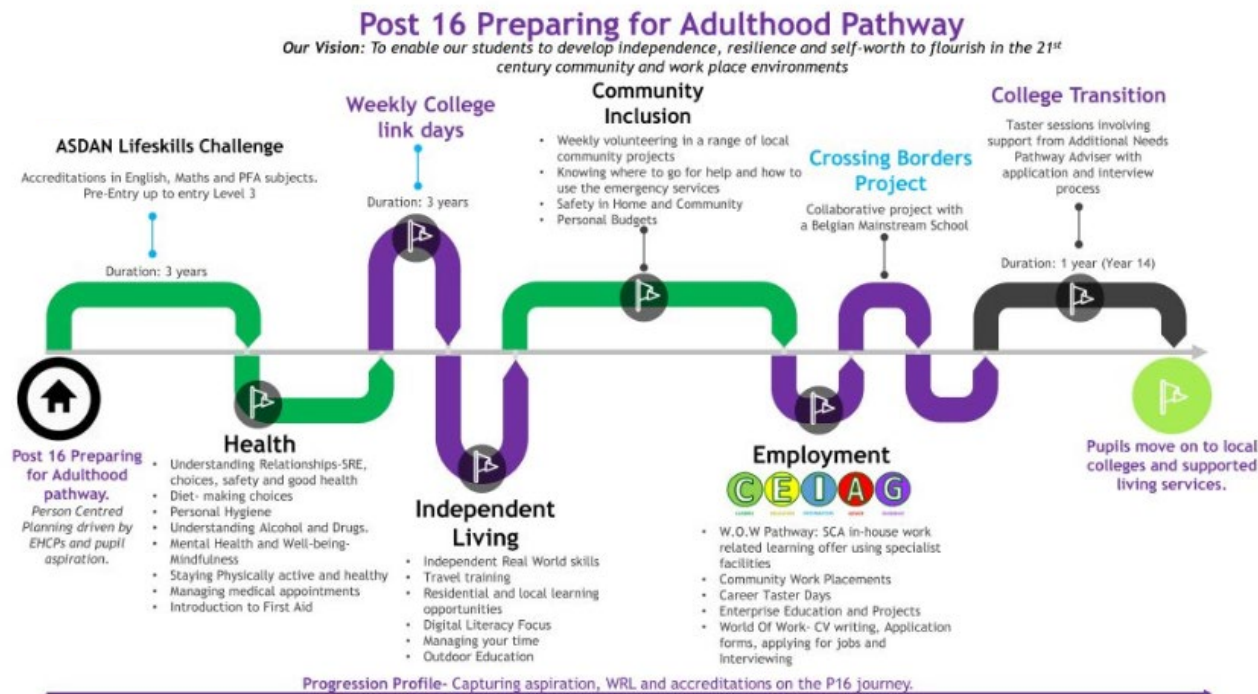


# Whole school Semi Formal Long Term Plan



	Autumn	Spring	Summer
<b>KS5 3 year a/b/c</b>	KS5 / Post16 3 year long term plan is attached below. It is presented in a different format as it is designed around the ASDAN Life Skills Challenge Accreditation scheme designed for young adults		



# Whole school Semi Formal Long Term Plan



<b>POST 16A</b>	
<b>ASDAN LIFESKILLS CHALLENGES</b>	
<b>SEMI-FORMAL LEARNERS</b> <i>Working towards Entry 1 (WTE1)    Entry 1 (ELC1)</i>	<b>FORMAL LEARNERS</b> <i>Entry level 2 (ELC2)    Entry Level 3 (ELC3)</i>
<b>AUTUMN TERM P16A</b>	
<b>Preparation for Adulthood (PFA)-Independent Living and Housing Skills</b>	
<b>KITCHEN SKILLS-Making a snack</b> WTE1 CR: 4690 ELC1 CR:4552	<b>EXPERIENCING ACTIVITIES RELATED TO TV AND MUSIC TERM 1:</b> CR: 2009, CR: 2004 (Term 1) <b>TRAVEL TRAINING TERM 2:</b> Cr: 5198, ELC3 Cr: 1082 (Term 2)
<b>Literacy</b>	
<b>Experiencing activities related to TV and Music.</b> WTE1 CR: 2005 & 2007/ ELC1 CR: 2008	<b>WRITING:</b> Writing Personal Letters, Postcards, e-mails and messages. CR:4890 (Autumn Term 1) <b>COMMUNICATING INFORMATION:</b> Researching famous people/presenting information about a famous person- CR: 1909 (term 2), CR: 3167 (All Term)
<b>Numeracy</b>	
<b>MONEY: Understanding and using money</b> WTE1: 1316 (Autumn Term) ELC1: 1314 (Autumn Term 1 & 2)	<b>MONEY: Using money (Term 1)</b> CR: 1313, CR:1312 <b>FUNCTIONAL SHOPPING SKILLS (Autumn term 2)</b> CR: 1882, CR: 3853
<b>Digital Literacy/ Media / ICT</b>	
<b>STOP MOTION PROJECT-</b> Enjoying watching and creating simple animation for a collaborative film project. WTE1 CR:2974                      ELC1 CR:2973	<b>STOP MOTION PROJECT-</b> Enjoying watching and creating simple animation for a collaborative film project. CR: 2972    CR: 2934 <b>DIGITAL LITERACY</b> ELC2:3145 (Autumn Term 2) <b>PRACTICAL COMPUTING,</b> Show understanding of how computers developed CR: 4288
<b>PFA-Community Inclusion</b>	
Experience different leisure facilities/ activities students would experience when moving on from school.	<ul style="list-style-type: none"> <li>• Godmanchester Nature Reserve/Paxton Pits once p/week</li> <li>• Weekly Friday College Links and impact booklet</li> <li>• Booking an activity- cinema experience trip Earwig evidence</li> </ul>

# Whole school Semi Formal Long Term Plan



	<ul style="list-style-type: none"> <li>Travel training-Ongoing each term (Guided bus to St Ives/Cambridge)</li> </ul>
<b>PFA-Good Health</b>	
Healthy food choices- lifeskills Friday AM Experience a variety of different exercises in school and community- Senior Games (Golf, Dance, Football, Cycling, Walking group) weekly sessions.	<b>CR: 5374-Independent preparation for Forest School.</b> Experience a variety of different exercises in school and community- Senior Games (Golf, Dance, Football, Cycling, Walking group) weekly sessions.
<b>PFA-Employability World of Work program</b>	
<b>CR- 2859 :Macmillan Coffee Morning Autumn Term 1-Work experience.</b> <b>Horticulture</b> -garden maintenance- Godmanchester Nature Reserve once p/week <b>Conservation work</b> – Post 16 Polytunnel/ Sensory Garden/ Science Garden <b>School shop College links-</b> Friday weekly sessions.	<ul style="list-style-type: none"> <li><b>Macmillan Coffee Morning Autumn Term 1-</b> Work experience.</li> <li><b>Horticulture</b>-garden maintenance- Godmanchester Nature Reserve once p/week</li> <li><b>Conservation work</b> – Post 16 Polytunnel/ Sensory Garden/ Science Garden</li> <li><b>School shop</b>-weekly sessions.                      <b>College links-</b> Friday weekly sessions.</li> </ul>
<b>Art/ Creativity/ Design</b>	
<b>Art and Music 2 x weekly sessions with specialist teachers</b>	<b>College Link subjects-</b> Creative Enterprise/ Music / Wood skills
<b>SPRING TERM P16A</b>	
<b>PFA- Independent Living and Housing Skills</b>	
<i>Semi-Formal Learners</i>	<i>Formal Learners</i>
<b>PERSONAL HYGIENE</b> <b>WTE1- 1234</b> <b>ELC1- 1939</b>	<b>HEALTH AND PERSONAL HYGIENE:</b> <b>ELC2 3858</b> <b>ELC3 3859</b>
<b>Literacy</b>	

# Whole school Semi Formal Long Term Plan



<p><b>LITERATURE APPRECIATION</b> <a href="#">ELC1-1508</a>  <b>LISTENING AND RESPONDING TO TEXT</b> <a href="#">WTE1- 1677</a>  <b>ENGAGING SUPPORTIVE OBJECTS LINKED TO A STORY</b>  <a href="#">WTE1-1537</a></p>	<p><b>PSHE THROUGH LITERATURE</b> (Relationship focussed literature- Shakespeare/ Elizabethan times) <a href="#">ELC2-1718</a> <a href="#">ELC3-5166</a></p>
<b>Numeracy</b>	
<p><b>TIME AND SEQUENCING</b> <a href="#">WTE1- 3067</a> <a href="#">ELC1- 3001</a></p>	<p><b>TIME AND TEMPERATURE</b> <a href="#">ELC2- 1925</a> <a href="#">ELC3-2493</a></p>
<b>Digital Literacy/ Media / ICT</b>	
<p><b>MEDIA-STOP MOTION PROJECT</b>- Enjoying watching and creating simple animation for a collaborative film project.  <a href="#">WTE1 CR:2974 continued</a> <a href="#">ELC1 CR:2973 continued</a></p>	<p><b>MEDIA-STOP MOTION PROJECT</b>- Enjoying watching and creating simple animation for a collaborative film project. <a href="#">ELC2 CR: 2972</a> <a href="#">ELC3 CR: 2934</a>  <b>ICT-Staying Safe on Social Media</b> <a href="#">ELC2-3264</a> <a href="#">ELC3-3265</a></p>
<b>PFA-Community Inclusion</b>	
<ul style="list-style-type: none"> <li>Experience different leisure facilities/ activities students would experience when left school</li> </ul>	<ul style="list-style-type: none"> <li>Godmanchester Nature Reserve/Paxton Pits once p/week</li> <li>Weekly Friday College Links Booking an activity- cinema experience trip Travel training-Ongoing each term (Guided bus to St Ives and Cambridge)</li> </ul>
<b>PFA-Good Health</b>	
<p><b>RELATIONSHIPS</b> <a href="#">WTE1: 1895</a> <a href="#">ELC1:1894</a>  Experience a variety of different exercises in school and community- Senior Games (Golf, Dance, Football, Cycling, Walking group) weekly sessions.</p>	<p><b>RELATIONSHIPS</b> <a href="#">ELC2-3645</a> <a href="#">ELC3-1397</a>  Experience a variety of different exercises in school and community- Senior Games (Golf, Dance, Football, Cycling, Walking group) weekly sessions.</p>
<b>PFA-Employability</b>	
<ul style="list-style-type: none"> <li>Horticulture-garden maintenance-</li> <li>Conservation work</li> <li>School shop</li> </ul>	<ul style="list-style-type: none"> <li>Horticulture-garden maintenance Conservation work</li> <li>School shop College links</li> </ul> <p><b>COMPLETING AN ENTERPRISE PROJECT- POP UP SHOP EVENTS- VALENTINES/EASTER THEME</b> <a href="#">ELC2-1756</a> <a href="#">ELC3- 1041</a></p>
<b>Art/ Creativity</b>	

# Whole school Semi Formal Long Term Plan



<ul style="list-style-type: none"> <li>2 x weekly sessions with specialist teachers</li> </ul>	College Link Subjects- Music course, cultural studies.
<b>SUMMER TERM P16A</b>	
<b>PFA-Independent Living and Housing Skills</b>	
<i>Semi-Formal Learners</i>	<i>Formal Learners</i>
<b>HOME SKILLS</b> <a href="#">WTE1-1033</a> <a href="#">ELC1-3107</a>	<b>HOME SKILLS- HEALTHY COOKING/ COOKING FOR MYSELF</b> <a href="#">ELC2-1024</a> <a href="#">ELC3-1171</a>
<b>Literacy</b>	
<b>THE WORLD OF WORK</b> <a href="#">WTE1-2348</a> <a href="#">ELC1-2350</a>	<b>THE WORLD OF WORK</b> <a href="#">ELC2-2355</a> <a href="#">ELC3-2669</a>
<b>Numeracy</b>	
<b>NUMBER</b> <a href="#">WTE1-1539</a> <a href="#">ELC1-2338</a>	<b>NUMBER</b> <a href="#">ELC2-2339</a> <a href="#">ELC3-2345</a>
<b>Digital Literacy/ Digital Media / ICT</b>	
<b>MEDIA-STOP MOTION PROJECT FINAL SHOWCASE</b> - Enjoying watching and creating simple animation for a collaborative film project.	<b>MEDIA-STOP MOTION PROJECT FINAL SHOWCASE</b> - Enjoying watching and creating simple animation for a collaborative film project.
<b>PFA- Community Inclusion</b>	
<ul style="list-style-type: none"> <li>Experience different leisure facilities/ activities students would experience when leaving school</li> <li>Norris Museum project</li> </ul>	<ul style="list-style-type: none"> <li>Godmanchester Nature Reserve/Paxton Pits once p/week</li> <li>Weekly Friday College Links</li> <li>Booking an activity- cinema experience trip</li> <li>Travel training-Ongoing each term (Guided bus to St Ives and Cambridge)</li> </ul>
<b>PFA-Good Health</b>	
<ul style="list-style-type: none"> <li>Experience a variety of different exercises in school and community.</li> </ul>	<ul style="list-style-type: none"> <li>Experience a variety of different exercises in school and community. <a href="#">Alcohol: use and abuse ELC2-1152</a> <a href="#">ELC3-1155</a></li> </ul>
<b>PFA-Employability</b>	

# Whole school Semi Formal Long Term Plan



<p><b>WORK PLACEMENT</b> Norris museum "Take Over Day" <b>Horticulture</b>-garden maintenance- class collaboration project with KS2 developing the post 16 polytunnel</p> <ul style="list-style-type: none"> <li>• Conservation work</li> <li>• School shop</li> </ul>	<p><b>WORK PLACEMENTS- W.O.W Careers Programme</b> Bespoke work placements in a variety of local businesses (Summer term 2)</p> <p><b>ELC3:Health and Safety In the workplace.1343</b></p> <ul style="list-style-type: none"> <li>• Horticulture-garden maintenance</li> <li>• Conservation work- Allotment project</li> <li>• School shop</li> </ul>
<b>Art/ Creativity</b>	
<ul style="list-style-type: none"> <li>• 2 x weekly sessions with specialist teachers</li> </ul>	<ul style="list-style-type: none"> <li>• College link- music and cultural studies courses. PROM</li> <li>• LEAVERS Assembly</li> </ul>

<h2>POST 16B</h2> <h3>ASDAN LIFESKILLS CHALLENGES</h3>	
<p><b>SEMI-FORMAL LEARNERS</b> <i>Working towards Entry 1 (WTE1) Entry 1 (ELC1)</i></p>	<p><b>FORMAL LEARNERS</b> <i>Entry level 2 (ELC2) Entry Level 3 (ELC3)</i></p>
<h2>AUTUMN TERM P16B</h2>	
<p><b>Preparation for Adulthood (PFA)Independent Living and Housing Skills</b></p>	
<p><b>PERSONAL SAFETY: Hazards around the home and the community</b> <i>WTE1 Hazards in the Kitchen CR: 1033 To add: create a challenge around experiencing safety skills in the home with support.</i> <i>ELC1 CR: Dangers around the home: 4987</i></p>	<p><b>PERSONAL SAFETY: Keeping Safe in the home and community/Identifying right and wrong</b> <i>ELC2 Keeping Safe:1912 (Autumn Term 1)</i> <i>ELC3 British Values: Identifying Right &amp; Wrong. Challenge reference: 1453</i> <b>TRAVEL TRAINING-</b> termly travel training sessions- <i>ELC2"Using a Bus" 1193</i></p>
<p><b>Literacy</b></p>	
<p><b>WRITING: Early writing/recording skills</b> <i>WTE1 CR Digital Literacy: 1077 To add: express their needs</i></p>	<p><b>WRITING: Essential writing skills</b> <i>ELC2 CR: 3124 Autumn Term 1 ELC3: 3136 Autumn Term 1</i></p>

# Whole school Semi Formal Long Term Plan



<p>through a digital device (grid player/mobile) with aid of symbols/Makaton.                  ELC1 CR Digital Literacy: 3144 <i>To do: Simplify challenge</i></p>	
<b>Numeracy</b>	
<p><b>MONEY Understanding and using money</b> (Challenges continued from P16A) <b>WTE1: 1316</b> <b>ELC1: 1314</b></p>	<p><b>MONEY Money Management/Calculations with Money</b> <b>ELC2 CR 5430</b>  <b>ELC3 CR: 2232</b></p>
<b>Digital Literacy/ Media / ICT</b>	
<p><b>ICT- Safety</b> <b>WTE1 CR: Using ICT in the Home 1162</b>  <b>ELC1 CR: Basic Internet Safety 1327</b></p>	<p><b>Digital Literacy-Using technology to communicate with others</b>  <b>ELC2 CR: 1079</b> <b>ELC3 CR: 1080</b></p>
<b>PFA-Community Inclusion</b>	
<p><b>WTE1 CR:1814-Going out in the community</b> <b>ELC1:1218</b>                  Experience different leisure facilities/ activities students would experience when moving on from school.</p>	<ul style="list-style-type: none"> <li>• Godmanchester Nature Reserve once p/week</li> <li>• Friday College Links Booking an activity- cinema experience trip</li> <li>• Travel training</li> </ul>
<b>PFA-Good Health</b>	
<p><b>SELF AND HOME CARE</b> <b>WTE1-Experiencing activities related to Health and Hygiene 2060</b> <b>ELC1-2648</b>                  Experience a variety of different exercises in school and community- Senior Games (Golf, Dance, Football, Cycling, Walking group) weekly</p>	<p><b>AWARENESS OF HEALTH SERVICES</b> <b>ELC2-1572</b> <b>ELC3-1573</b>                  Experience a variety of different exercises in school and community- Senior Games (Golf, Dance, Football, Cycling, Walking group) weekly sessions.</p>
<b>PFA-Employability</b>	
<p><b>ANIMAL CARE-KNOWLEDGE OF PETS (COLLEGE COURSE LINK)</b>  <b>WTE1-1322</b> <b>ELC1-1321</b>  <b>Macmillan Coffee Morning Autumn Term 1-</b> Work experience.  <b>Horticulture-</b>garden maintenance- Godmanchester Nature Reserve once p/week  <b>Conservation work</b> – Post 16 Polytunnel/ Sensory Garden/ Science Garden  <b>School shop</b> <b>College links-</b> Friday weekly sessions.</p>	<p><b>ANIMAL CARE-KNOWLEDGE OF PETS (COLLEGE COURSE LINK)</b>  <b>ELC2-1320</b> <b>ELC3-1319</b>  <b>Macmillan Coffee Morning Autumn Term 1-</b> Work experience.  <b>Horticulture-</b>garden maintenance- Godmanchester Nature Reserve once p/week  <b>Conservation work</b> – Post 16 Polytunnel/ Sensory Garden/ Science Garden  <b>School shop</b> <b>College links-</b> Friday weekly sessions.</p>
<b>Art/ Creativity</b>	



# Whole school Semi Formal Long Term Plan



Art and Music 2 x weekly sessions with specialist teachers	College Link Subjects- Creative Enterprise course, Forest School weekly sessions.
<b>SPRING TERM P16B</b>	
<b>PFA-Independent Living and Housing Skills</b>	
<i>Semi-Formal Learners</i>	<i>Formal Learners</i>
<b>RECYCLING</b> <b>WTE1- 1706</b> ELC1- 5346	<b>RECYCLING</b> ELC2-4856     ELC3-4855
<b>Literacy</b>	
<b>Exploring and Participating in a sensory story</b> WTE1 CR: 2280   ELC1 CR 2281	<b>Reading, Listening and Responding to Text/ Developing reading skills</b> ELC2-1732     ELC3-3133
<b>Numeracy</b>	
<b>TIME: Practical understanding and Organisation of Time: Seasons</b> <b>WTE1- 1714</b> ELC1- 2466	<b>TIME: Practical understanding and Organisation of Time/Telling the Time</b> ELC2- 1711     ELC3-5656
<b>PFA-Digital Media / ICT</b>	
<b>ICT-Basic ICT Introduction</b> WTE1 CR: Creating a poster using the computer 4626 ELC1 CR: Using Word Processing Software 5851	<b>ICT-Safeguarding: Your Digital Profile</b> ELC2-1333 ELC3-1419
<b>Community Inclusion</b>	
Experience different leisure facilities/ activities students would experience when left school	<ul style="list-style-type: none"> <li>Experience different leisure facilities/ activities students would experience when left school</li> </ul>
<b>PFA-Good Health</b>	
<b>MEDICAL SELF-CARE</b> <b>WTE1- Using Medical Services 1568</b> ELC1-Basic First Aid 3927	<b>MEDICAL SELF-CARE</b> ELC2- Basic First Aid 2253
<b>Employability</b>	



# Whole school Semi Formal Long Term Plan



Horticulture-garden maintenance- Conservation work School shop WTE1- Participating in Lego Therapy 4623 ELC1-Recognising organisational logos 1317	Horticulture-garden maintenance School shop College links <b>COMPLETING AN ENTERPRISE PROJECT</b> ELC2-Understanding Organisational Logos 1338 products or services are advertised 1346	Conservation work College links ELC3- Understanding the different ways 1346
<b>Art/ Creativity</b>		
2 x weekly sessions with specialist teachers	College Link Subjects- Music course, cultural studies.	
<b>SUMMER TERM P16B</b>		
<b>PFA-Independent Living and Housing Skills</b>		
<i>Semi-Formal Learners</i>	<i>Formal Learners</i>	
<b>DEALING WITH PROBLEMS (PROBLEM SOLVING ACTIVITIES)</b> WTE1- Experience the use of objects of reference 3849 (Sensory activities/ Attention Autism) ELC1- 1052	<b>DEALING WITH PROBLEMS (PROBLEM SOLVING ACTIVITIES)</b> ELC2-1053 ELC3-1054	
<b>Literacy</b>		
<b>THE WORLD AROUND US-LOCAL AND WORLD NEWS-</b> WTE1 Personal Profile: This is me-1208 ELC1-2324	<b>WORLD NEWS</b> ELC2-2325 ELC3-2326	
<b>Numeracy</b>		
<b>NUMBER: using numbers in practical situations/working with numbers</b> (Numbers 1-5)-1540 ELC1 (working with numbers up to 10) WTE1 3080	<b>NUMBER: working with numbers</b> ELC2 (up to 50) -3097 ELC3 (up to 100 or more) -3122	
<b>Digital Media / ICT</b>		
<b>USING ICT IN EVERDAY LIFE TO SUPPORT INDEPENDENCE</b> WTE1-ICT in everyday life 1227 ELC1- Use of Computer Technology 1744	<b>USING ICT IN EVERDAY LIFE TO SUPPORT INDEPENDENCE</b> ELC2-Using technology in the home & community to support independence1911	

# Whole school Semi Formal Long Term Plan



Community Inclusion	
Experience different leisure facilities/ activities students would experience when left school Norris Museum project	Experience different leisure facilities/ activities students would experience when left school Allotment project
PFA-Good Health	
<b><u>PARTICIPATE IN HEALTH AND FITNESS ACTIVITIES</u></b> WTE1-1903 ELC1-2316 Experience a variety of different exercises in school and community.	<b><u>PARTICIPATE IN HEALTH AND FITNESS ACTIVITIES</u></b> ELC2-2441 ELC3-Introduction to sport 1180 Experience a variety of different exercises in school and community.
PFA-Employability	
<b><u>WORK PLACEMENT</u></b> Norris museum "Take Over Day" <b>Horticulture</b> -garden maintenance- class collaboration project with KS2 developing the post 16 polytunnel Conservation work School shop	<b>ELC3- preparation for work 2677</b> <b><u>WORK PLACEMENTS- W.O.W Careers Programme</u></b> Bespoke work placements in the local community. (Summer term 2) Horticulture-garden maintenance Conservation work- Allotment project School shop
Art/ Creativity	
2 x weekly sessions with specialist teachers	College link- music and cultural studies courses. PROM preparation LEAVERS Assembly preparation

POST 16C	
ASDAN LIFESKILLS CHALLENGES	
SEMI-FORMAL LEARNERS	FORMAL LEARNERS
<i>Working towards Entry 1 (WTE1) Entry 1 (ELC1)</i>	<i>Entry level 2 (ELC2) Entry Level 3 (ELC3)</i>
AUTUMN TERM P16C	
Preparation For Adulthood (PFA) Independent Living and Housing Skills	

# Whole school Semi Formal Long Term Plan



<p>WTE1 CR: showing awareness of water through Multi-sensory experiences 4328 (Attention Autism/ Sensory Stories)                      ELC1 CR: Participating in Painting and Decorating activities 1793</p>	<p>ELC2:1911 Using technology in the home and community                      TRAVEL TRAINING- termly travel training sessions-                      ELC2 Using a Bus 1193                      ELC3 Planning a Journey 1028</p>
<b>Literacy</b>	
<p><b>WRITING:</b> WTE1 Use symbols to communicate during a sensory story around myths and legends: 5101                      Myths and Legends-ELC1 Challenge Reference: 5049</p>	<p><b>WRITING: MYTHS AND LEGENDS</b> ELC2 CR: 5050 Autumn Term 1                      ELC3: Filling in a form: 3734 Autumn Term 1</p>
<b>Numeracy</b>	
<p><b>MEASURE: Beginning to understand measure: Length</b>                      WTE1: 1543 (Autumn Term 1&amp;2)                      ELC1: 4969 (Autumn Term 1 &amp; 2)</p>	<p><b>MEASURE: Knowing about temperature and instruments of measure</b>                      ELC2/calculating length, weight and capacity ELC3 ELC2 Challenge reference: 1676 ( Autumn Term 1)                      ELC3 Challenge reference: 2494 (Autumn Term 1)</p>
<b>Digital Literacy/ Media / ICT</b>	
<p><b>Functional ICT</b>                      WTE1 CR: Respond to and engage with a range of computing activities in the school environment 3681                      ELC1 CR: Developing Functional Skills: Digital Literacy 3144</p>	<p><b>DIGITAL LITERACY-RESEARCH A TOPIC OF INTEREST</b>                      ELC2 CR: Research a topic of interest 2863 ELC3 CR: 4399</p>
<b>PFA-Community Inclusion</b>	
<p>ELC1:1890:Going Shopping                      Experience different leisure facilities/ activities students would experience when moving on from school.</p>	<p>ELC3:Social Opportunities in own community:1181                      Godmanchester Nature Reserve once p/week Friday College Links                      Booking an activity- cinema experience trip Travel training</p>
<b>PFA-Good Health</b>	

# Whole school Semi Formal Long Term Plan



<p><b>EMOTIONS</b> <b>WTE1-5358</b>      <b>ELC1- Identifying basic emotions 5151</b></p> <p>Healthy food choices- lifeskills      Experience a variety of different exercises in school and community- Senior Games (Golf, Dance, Football, Cycling, Walking group) weekly sessions.</p>	<p><b>Science and the Human Body</b>      <b>ELC2: 5806</b></p> <p>Experience a variety of different exercises in school and community- Senior Games (Golf, Dance, Football, Cycling, Walking group) weekly sessions.</p>
<p><b>PFA-Employability</b></p>	
<p><b>DESIGN PROCESS</b> <b>WTE1-Making Models 2320</b>      <b>ELC1-Making Models 2321</b></p> <p><b>Macmillan Coffee Morning Autumn Term 1-</b> Work experience. <b>Horticulture</b>-garden maintenance- Godmanchester Nature Reserve once p/week <b>Conservation work</b> – Post 16 Polytunnel/ Sensory Garden/ Science Garden      <b>School shop</b></p>	<p><b>DESIGN PROCESS</b> <b>ELC2- Making models 2322</b>      <b>ELC3- Design and make a wooden product 1010</b></p> <p><b>Macmillan Coffee Morning Autumn Term 1-</b> Work experience. <b>Horticulture</b>-garden maintenance- Godmanchester Nature Reserve once p/week <b>Conservation work</b> – Post 16 Polytunnel/ Sensory Garden/ Science Garden <b>School shop</b>      <b>College links-</b> Friday weekly sessions.</p>
<p><b>Art/ Creativity</b></p>	
<p><b>Art and Music 2 x weekly sessions with specialist teachers</b></p>	<p><b>College Link Subjects-</b> Creative Enterprise course, Forest School weekly sessions.</p>
<p><b>SPRING TERM P16C</b></p>	
<p><b>PFA-Independent Living and Housing Skills</b></p>	
<p><b>Semi-Formal Learners</b></p>	<p><b>Formal Learners</b></p>
<p><b>ROAD SAFETY AWARENESS</b> <b>WTE1- 5843</b>      <b>ELC1- 5354</b></p>	<p><b>ROAD SAFETY AWARENESS</b> <b>ELC2-5382</b>      <b>ELC3-2928</b></p>
<p><b>Literacy</b></p>	
<p><b>Communication: Knowing about myself</b> <b>WTE1 Challenge Reference: 4539</b> <b>ELC1 Challenge Reference: 5125</b></p>	<p><b>Communication: Knowing about myself</b> <b>ELC2-5126</b> <b>ELC3-Developing communication skills-3167</b></p>

# Whole school Semi Formal Long Term Plan



Numeracy	
<b>SHAPES</b> <b>WTE1- Exploring shapes: 1965</b> ELC1- Identifying 2D and 3D shapes: 3086	<b>SHAPES</b> ELC2- Properties of 2D and 3D shapes:1713 ELC3- Understanding properties of shapes and positional vocabulary: 2502
Digital Media / ICT	
<b>Creative technology</b> <b>WTE1 CR: Using a tablet/smartphone to play a game 1165</b> ELC1 CR: Creating Images Digitally 1695	<b>Home technology</b> ELC2 CR: Using technology in the home & community to support independence 1911
PFA-Community Inclusion	
<ul style="list-style-type: none"> <li>Experience different leisure facilities/ activities students would experience when left school</li> </ul>	<ul style="list-style-type: none"> <li>Experience different leisure facilities/ activities students would experience when left school</li> </ul>
Good Health	
<b>Yoga and Health</b> _____ <b>WTE1-1924</b> <b>ELC1-2319</b>	<b>Yoga and Health</b> _____ <b>ELC2-2465</b>
PFA-Employability	
Horticulture-garden maintenance- Conservation work School shop	Horticulture-garden maintenance      Conservation work School shop      College links <b>COMPLETING AN ENTERPRISE PROJECT</b> <b>ELC2-1756</b> <b>ELC3- 1041</b>
Art/ Creativity	
<ul style="list-style-type: none"> <li>2 x weekly sessions with specialist teachers</li> </ul>	College Link Subjects- Music course, cultural studies.
SUMMER TERM P16C	
PFA-Independent Living and Housing Skills	
<i>Semi-Formal Learners</i>	<i>Formal Learners</i>

# Whole school Semi Formal Long Term Plan



<b>PARTICIPATE IN GARDENING</b> WTE1-sensory awareness outdoors 2159 ELC1- Caring and growing plants from seeds 5797	<b>PARTICIPATE IN GARDENING ACTIVITIES</b> ELC2-1045                      ELC3-1047
<b>Literacy</b>	
<b>Reading: Recognising social signs in the local community</b> WTE1-Learning activities related to local community: 2642 ELC1-4375	<b>Reading: Recognising social signs in the local community</b> ELC2-4342                      ELC3-Reading to understand-3134
<b>Numeracy</b>	
<b>NUMBER: calculating with numbers up to 10</b> WTE1- 1539    WTE1-4387                      ELC1-3081	<b>NUMBER: calculating with numbers; addition and subtraction</b> ELC2-2099                      ELC3-2122
<b>Digital Media / ICT</b>	
WTE1- Participate in and respond to ICT activities in the school environment 3680    ELC1- Intro to photography and animation 3306	ELC2- To follow a brief and book a flight on the Internet 5349
<b>PFA-Community Inclusion</b>	
Experience different leisure facilities/ activities students would experience when left school                      Norris Museum project	Experience different leisure facilities/ activities students would experience when left school                      Allotment project
<b>PFA-Good Health</b>	
<b>Mental Health and Wellbeing</b> WTE1: Visiting a sensory room 1139 ELC1- Mental Health and Wellbeing 2614	<b>Mental Health and Wellbeing</b> ELC2-2956                      ELC3-1451 <b>Household laundry/ironing skills</b> ELC2-Laundry 2302                      ELC3-1239
<b>PFA-Employability</b>	
<b>WORK PLACEMENT</b> Norris museum "Take Over Day"                      Horticulture-garden maintenance- class collaboration project with KS2 developing the post 16 polytunnel                      Conservation work                      School shop	<b>WORK PLACEMENTS- W.O.W Careers Programme</b> Bespoke work placements in the local community. (Summer term 2) Horticulture-garden maintenance                      Conservation work- Allotment project                      School shop
<b>Art/ Creativity</b>	
<b>2 x weekly sessions with specialist teachers</b>	College link- music and cultural studies courses. PROM/LEAVERS Assembly