



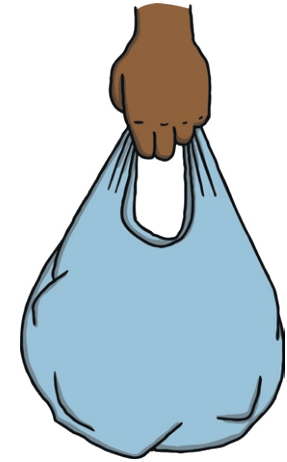
Pick up litter.

twinkl.com



Don't use straws or plastic bottles.

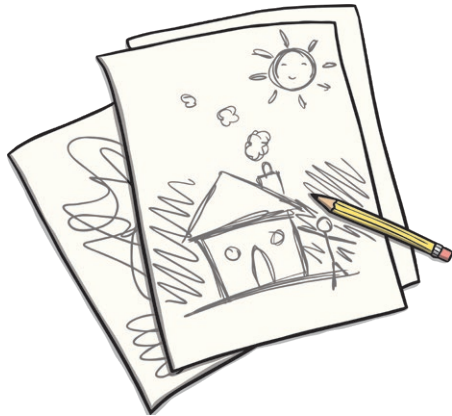
twinkl.com



Take your own reusable bags with you when you are out shopping.

twinkl.com

This resource is fully in line with the Learning Outcomes and Core Themes outlined in the PSHE Association [Programme of Study](#).



Don't waste paper.

twinkl.com



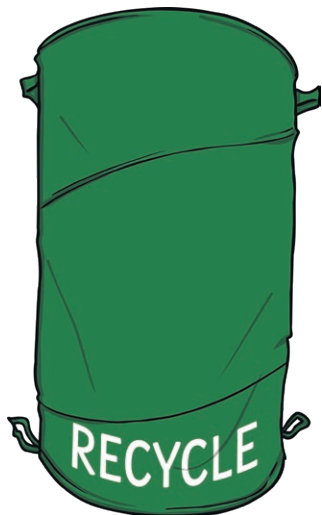
Avoid using the car when you don't need to and walk with a trusted adult when you are going on a short journey.

twinkl.com



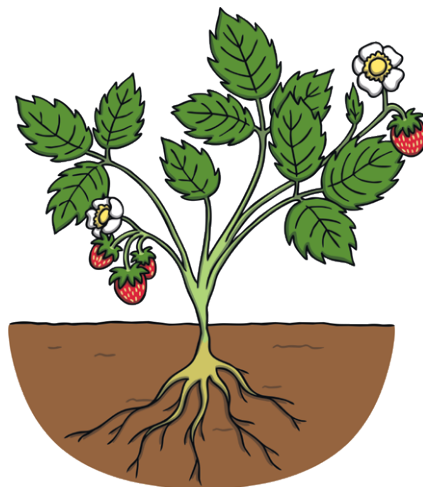
When you need to make a longer journey, take public transport when possible to avoid unnecessary fumes from more vehicles.

twinkl.com



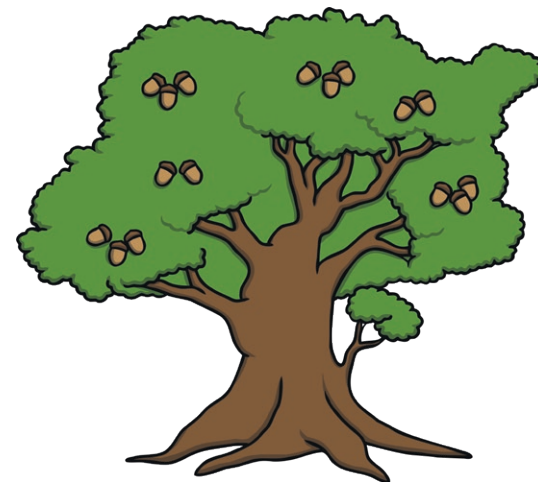
Recycle as much as you can.

twinkl.com



Grow your own fruit
or vegetables.

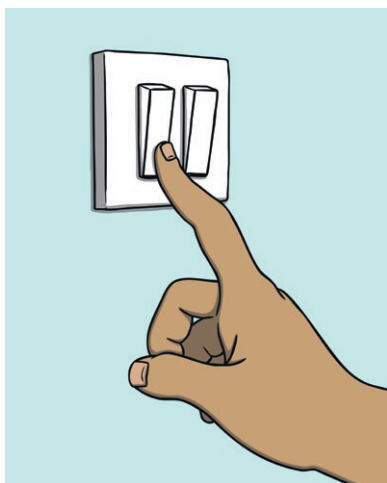
twinkl.com



Plant a tree.

twinkl.com

This resource is fully in line with the Learning Outcomes and Core Themes outlined in the PSHE Association [Programme of Study](#).



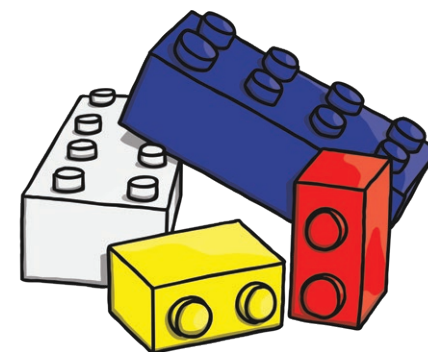
Switch the lights off when you
leave a room.

twinkl.com



Use paper products that have
been made from
recycled material.

twinkl.com



When you have finished playing
with plastic toys, take them
to the charity shop instead of
throwing them away.

twinkl.com